



Custom Simple Wrap Seedbom Guide

STEP 1 - DESIGN YOUR SEEDBOM SLEEVE

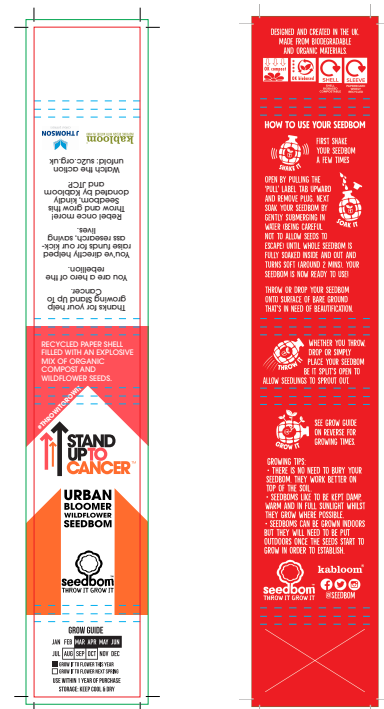
Our Simple Wrap design measures: 252mm x 40mm

The front side

There is a grow guide and storage info on the base that's fixed (colour is editable) otherwise it is free for you to customize as you please. We can also provide Seedbom logo if required.

The inside

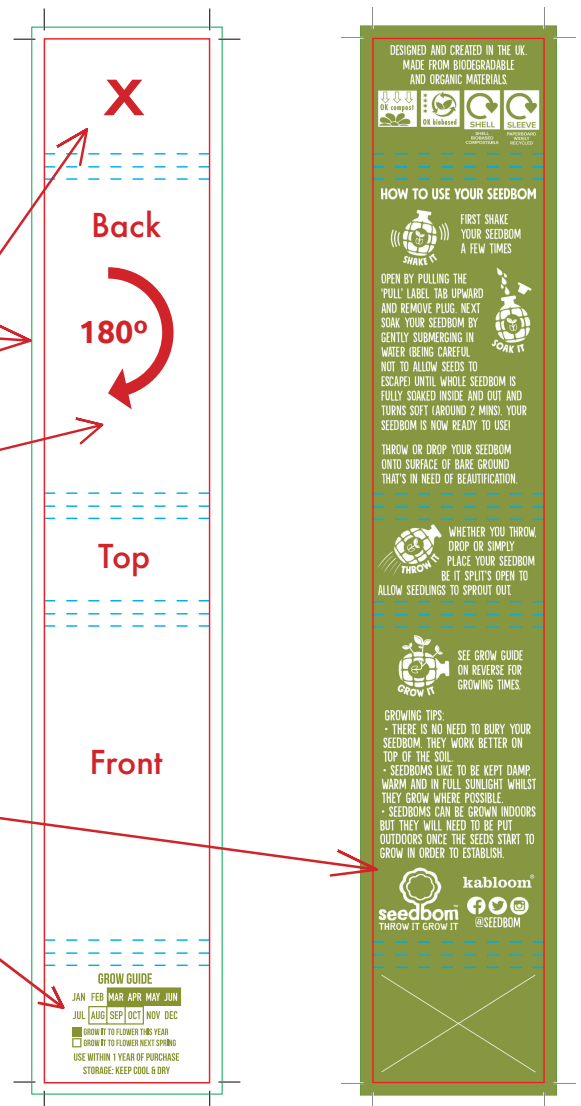
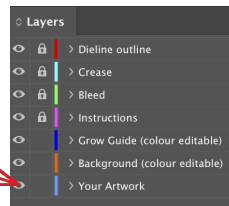
Instructions are fixed, but you can change the background colour.



Example of a custom sleeve design

STEP 2 - ADD ARTWORK TO TEMPLATE

- Use the 'Your Artwork' layer to add your artwork.
- Ensure artwork has a minimum 3mm bleed all around. The green outer guide on template shows you where the artwork should reach.
- Please note this section will be hidden from view.
- Please note artwork on the back section must be flipped 180° to be upside down on template. Once wrapped around the Seedbom it will be read the right way up.
- Inside instructions are fixed but the background colour can be edited to fit with your colour scheme. A variety of language translations available on request, please contact to request.
- Grow guide on base is fixed but colour is editable.



STEP 3 - SEND TO US

Send artwork to hello@kabloom.co.uk for review.
We will send back a PDF proof for final approval prior to printing.

The template

Before you send us the final artwork, please ensure sure that:

- All text and logos are outlined and converted into vector format.
- All colors and images are CMYK, and images are 300dpi.
- The print file has a 3 mm bleed.
- Print file format is pdf, ai or eps.

kabloom
INSPIRING DESIGN WITH NATURE IN MIND